

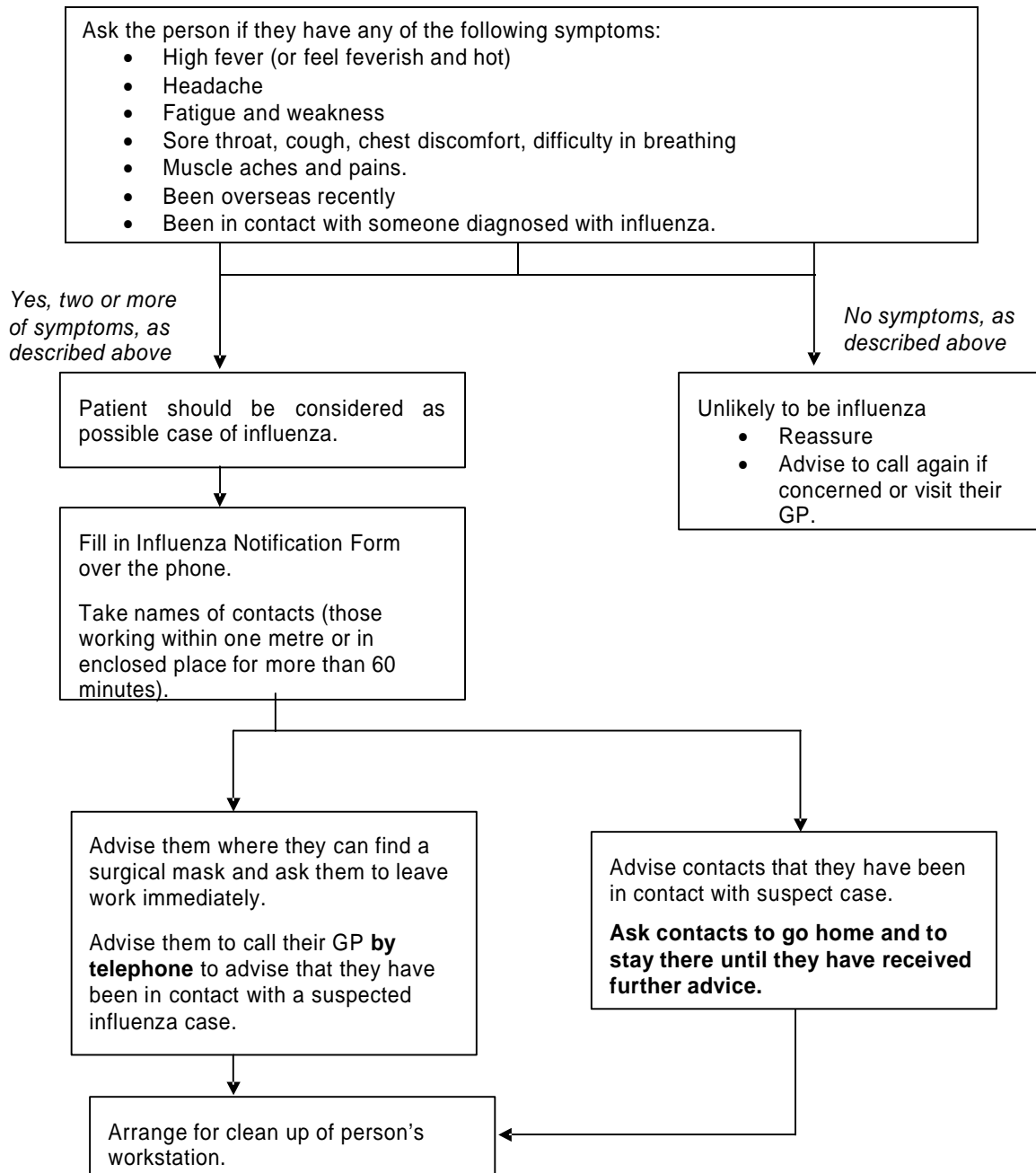
# Sample Document

## Screening Checklist Detection & Management of Suspected Influenza Cases

---

### Process

- 1) The Influenza Manager receives a call from a person suspecting they may have influenza
- 2) Do not visit the person if this can be avoided – manage the process over the telephone
- 3) Follow the flowchart below



# SAMPLE FORM

## Influenza-Like Illness (ILI) Assessment Form

---

An ILI assessment tool may be used as a screening tool to determine if employees should be excluded from work due to illness.

Please check the following:

ILI (Influenza-Like Illness) in the general population is determined by the presence of 1, 2 and 3 and any of 4:a-c, which could be due to the influenza virus:

- \_\_\_\_\_ 1. Sudden onset of respiratory illness **AND**
- \_\_\_\_\_ 2. Fever greater than 38.0 degrees C **AND**
- \_\_\_\_\_ 3. Cough
- AND**
- \_\_\_\_\_ 4. One or more of the following
  - \_\_\_\_\_ a. sore throat
  - \_\_\_\_\_ b. joint aches
  - \_\_\_\_\_ c. muscle aches or weakness

\*\*May not be present in elderly people

Persons with influenza-like illness should remain at home until they have fully recovered (usually 7 days or five days after symptoms stop)

Persons, who have been exposed within the last 3 days to someone with influenza-like illness, should stay at home for 3 days until they are sure they are not ill.

Fit to Work

- Recovered from influenza-like Illness (ILI)
- Immunized for longer than two weeks
- On antiviral medication
- Asymptomatic

Unfit for Work

Has influenza-like Illness (see ILI Assessment Tool above)

Fit to Work with Restrictions

- Due to limited resources, persons with ILI may be asked to work with restrictions
- Recommend such individuals be isolated physically from other employees or customers
- Maintain meticulous hand hygiene and environmental cleaning.

## SAMPLE FORM Influenza Contact List

---

Pandemic influenza contacts are people who have had close physical (less than one foot) or confined airspace contact with an infected person, within four days of that person developing symptoms. These are likely to include family members and/or other living companions, workmates (if in close contact situations or confined airspace environments), and some recreational companions.

Note: Epidemiological evidence from a developing pandemic may change the definition of a "contact".

Retain this list and provide to the Pandemic Coordinator or his/her designated officer on request.

Name of person reporting Ill: \_\_\_\_\_

<b>Persons whom the affected staff has interacted with since displaying symptoms</b>				
	<b>Name</b>	<b>E-mail</b>	<b>Phone</b>	<b>Address</b>
1				
2				
3				
4				
5				
6				
7				
8				
9				
10				